

# Predicted High Park Fire Flood Response: Misc. Poudre Canyon



USDA Natural Resources Conservation Service

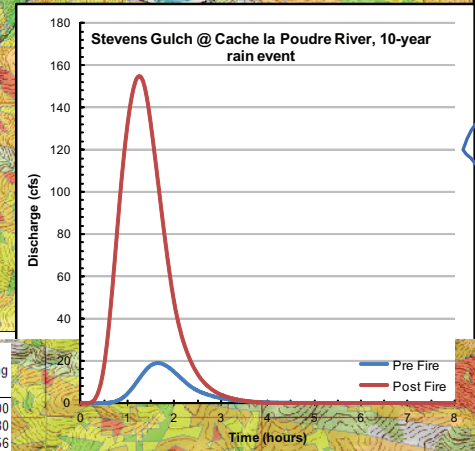
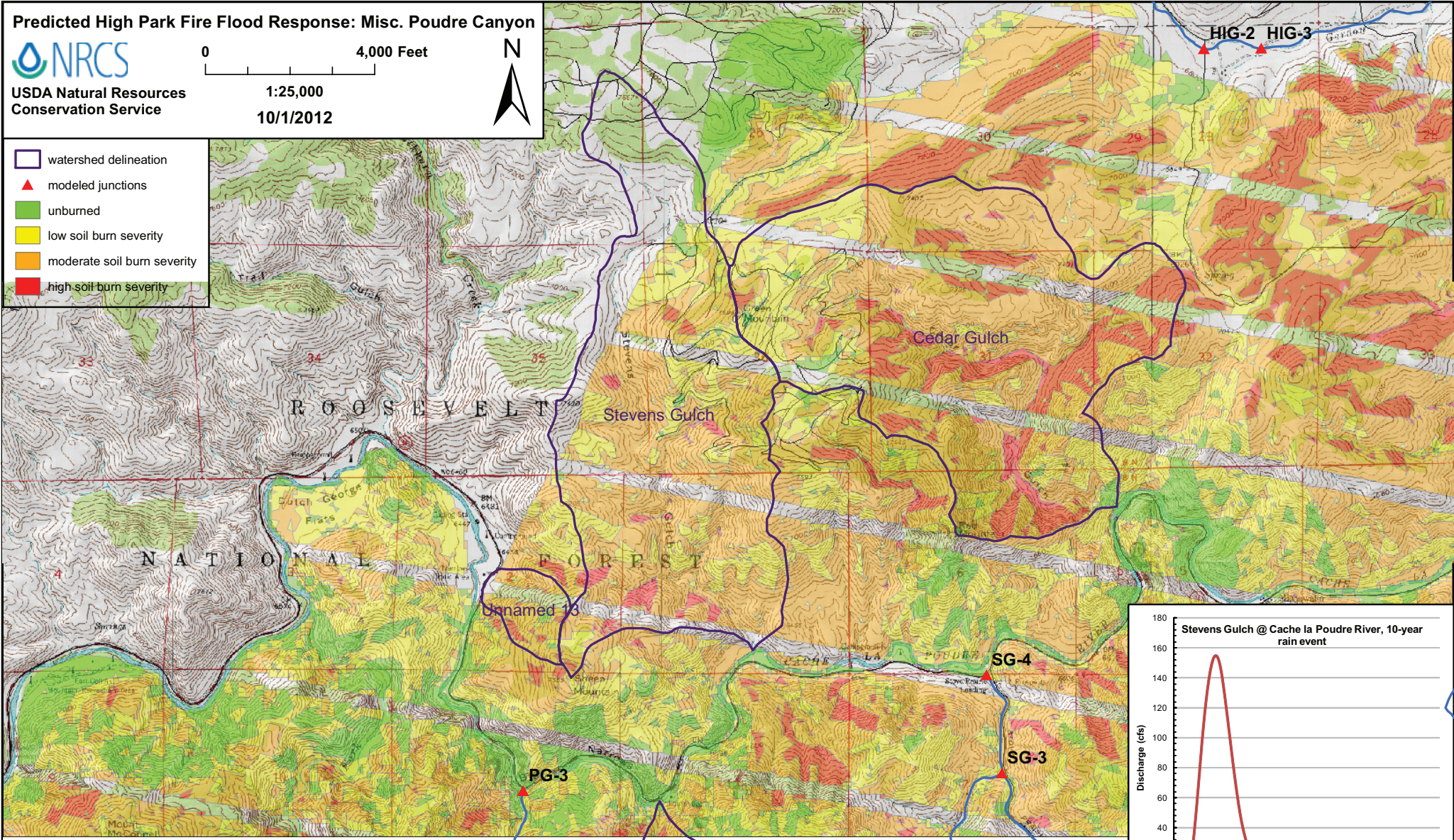
0 4,000 Feet

1:25,000

10/1/2012



- watershed delineation
- ▲ modeled junctions
- unburned
- low soil burn severity
- moderate soil burn severity
- high soil burn severity



| Junction or Catchment | Drainage Area (mi <sup>2</sup> ) | 2-Year Rain Event (0.8 inches) |           |           |              | 10-Year Rain Event (1.5 inches) |           |           |              | 25-Year Rain Event (1.8 inches) |           |           |              | 50-Year Rain Event (2.2 inches) |           |           |              | 100-Year Rain Event (2.4 inches) |           |           |              |
|-----------------------|----------------------------------|--------------------------------|-----------|-----------|--------------|---------------------------------|-----------|-----------|--------------|---------------------------------|-----------|-----------|--------------|---------------------------------|-----------|-----------|--------------|----------------------------------|-----------|-----------|--------------|
|                       |                                  | Predicted Flow (cfs)           |           | Post/Pre  | Sed. Bulking | Predicted Flow (cfs)            |           | Post/Pre  | Sed. Bulking | Predicted Flow (cfs)            |           | Post/Pre  | Sed. Bulking | Predicted Flow (cfs)            |           | Post/Pre  | Sed. Bulking | Predicted Flow (cfs)             |           | Post/Pre  | Sed. Bulking |
|                       |                                  | Pre Fire                       | Post Fire | Peak Flow | Flow (cfs)   | Pre Fire                        | Post Fire | Peak Flow | Flow (cfs)   | Pre Fire                        | Post Fire | Peak Flow | Flow (cfs)   | Pre Fire                        | Post Fire | Peak Flow | Flow (cfs)   | Pre Fire                         | Post Fire | Peak Flow | Flow (cfs)   |
| Cedar Gulch           | 2.00                             | 0                              | 57        | n/a       | 71           | 89                              | 390       | 4.4       | 490          | 180                             | 600       | 3.4       | 750          | 330                             | 920       | 2.8       | 1200         | 420                              | 1100      | 2.6       | 1400         |
| Stevens Gulch         | 1.73                             | 0                              | 4.6       | n/a       | 5.8          | 19                              | 160       | 8.2       | 190          | 59                              | 270       | 4.5       | 330          | 140                             | 450       | 3.2       | 560          | 190                              | 550       | 2.9       | 680          |
| Unnamed 13            | 0.11                             | 0                              | 0         | n/a       | 0            | 0                               | 10        | n/a       | 13           | 0.4                             | 20        | 50        | 25           | 4.4                             | 36        | 8.2       | 45           | 6.8                              | 45        | 6.6       | 56           |