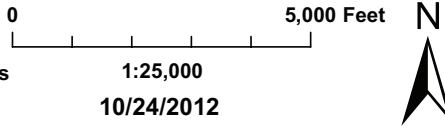


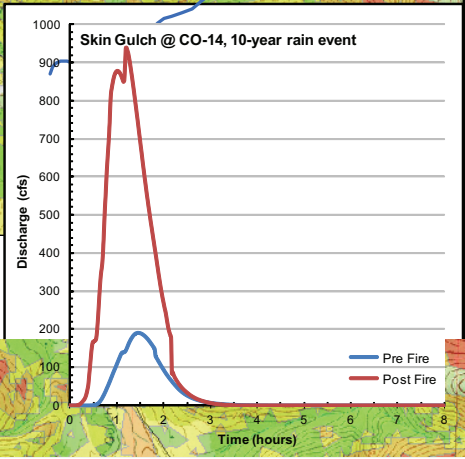
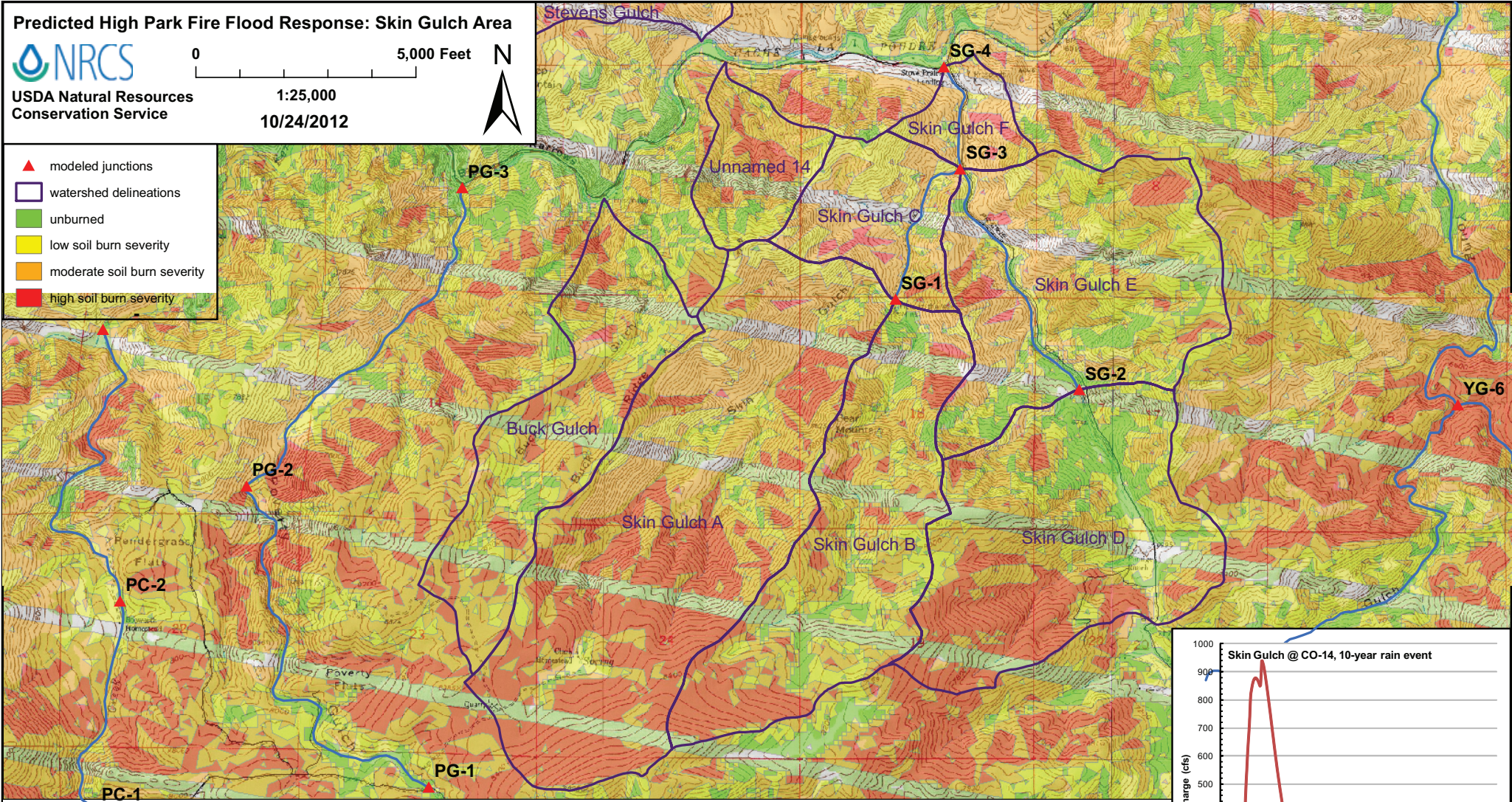
Predicted High Park Fire Flood Response: Skin Gulch Area



USDA Natural Resources Conservation Service



- ▲ modeled junctions
- watershed delineations
- unburned
- low soil burn severity
- moderate soil burn severity
- high soil burn severity



Junction or Catchment	Drainage Area (mi ²)	2-Year Rain Event (0.8 inches)				10-Year Rain Event (1.5 inches)				25-Year Rain Event (1.8 inches)				50-Year Rain Event (2.2 inches)				100-Year Rain Event (2.4 inches)			
		Predicted Flow (cfs)	Post/Pre	Peak Flow	Sed. Bulking	Predicted Flow (cfs)	Post/Pre	Peak Flow	Sed. Bulking	Predicted Flow (cfs)	Post/Pre	Peak Flow	Sed. Bulking	Predicted Flow (cfs)	Post/Pre	Peak Flow	Sed. Bulking	Predicted Flow (cfs)	Post/Pre	Peak Flow	Sed. Bulking
Skin Gulch A	2.02	0	37	n/a	46	30	320	10.6	400	85	510	6.0	640	190	800	4.2	1000	260	960	3.8	1200
Skin Gulch B	1.07	0.6	43	72	54	80	260	3.3	330	140	390	2.7	490	250	590	2.4	740	310	700	2.3	870
SG-1	3.09	0.6	79	132	99	100	570	5.5	710	220	880	4.1	1100	420	1400	3.3	1700	540	1600	3.1	2000
SG-2	1.19	0	21	n/a	26	45	190	4.3	240	96	310	3.3	390	190	500	2.7	630	240	610	2.5	760
SG-3	5.81	0.6	110	180	140	190	950	5.0	1200	390	1500	3.8	1900	800	2400	3.0	3000	1000	2900	2.8	3600
SG-4	5.99	0.6	110	180	140	190	940	4.9	1200	400	1500	3.9	1900	790	2400	3.0	3000	1000	2900	2.8	3600
Buck Gulch	0.79	0	15	n/a	19	34	130	3.8	160	70	210	2.9	260	130	330	2.5	410	170	390	2.3	490
Unnamed 14	0.28	0	1.9	n/a	2.4	2.0	41	20.5	51	9.7	69	7.1	86	25	120	4.7	150	33	140	4.3	180